

ROAD INDEX

A ALLEN DR. AUBURN RD.	C-4 DI-C6	H cont. HIDDEN OAKS DR.	A-6 ROSETTA DR. RIVERWOOD DR.	A-5 B-3
B BASS LAKE RD. BASSWOOD RD. BEAN RD. BRADFORD DR. BROOKSIDE RD. BUTTERNUT RD. BOULDER GLEN DR. BRIDLE TRAIL	F2-F6 D-2 D5-F5 F-5 D-2 B4-D6 C5	I J	K KLATKA DR.	L LAKESIDE DR. LAKEVIEW RD. LIVERY LANE LE GEND CREEK DR.
C CARROLL DR. CEDAR RD. CHESTNUTDALE RD. CHELSEA DR. CAPTAINS WALK CROWS HOLLOW COUNTRY OAKS TRAIL COACHMAN DRIVE	C-4 A6-C6 D-2 D-2 F5 F5 F6 D5	M MAPLEWOOD RD. MAYFIELD RD. MULBERRY RD. MANOR DR. MEADOWHURST LN. MILLSTONE DR. MERRITT RD. MILLVIEW DR.	D-2 A4-FA A2-C1 F5 B-1 D5 F6 J	N NOLLWOOD DRIVE NANTUCKET DR. NORTH BRIDLE TRAIL NOTTINGHAM CT.
D EDGEWOOD RD. ELK RUN EASTRIDGE CIRCLE	D-2 D-6 D-6	O ORCHARD RD. OVERLOOK RD. ORIOLE PL.	D-2 D-2 D-2	P PARKSIDE RD. PRINCETON DR. PARKWAY RD. PADDOCK DR.
E FOWLERS MILL RD. FRAZIER DR. FOREST RD. FOREST VIEW DR.	C1-C4 F5 D-2 C-2	R RAYNUT DR. RAYMOND DR. RAVENNA RD. ROCKHAVEN DR. ROCKSIDE RD.	D-2 D-2 D-2 FI-F6 A4-B6 D-2	S SHERMAN RD. SPRINGWAY RD. SYCAMORE RD. SYLVANHURST DR. STANFIELD DR. STONEGATE SUNRIDGE CR.
F GLENWOOD DR. GREENBRIER DR.	C6 E5	T THWING RD. TREADWAY DR. TWIN MILLS LANE	D-2 F5 C5 F-5	U V VALLEYVISTA DR.
G HARVARD DR. HEATH RD. HILLCREST DR. HIDDEN SPRINGS DR. HIGHLAND VIEW DR. HEMLOCK RIDGE DR.	F-3 A3-A5 A-4 B-1 B-1 B2	W WEARSCH RD. WILBERT RD. WINCHESTER DR. WILSON MILLS RD. WOODIEBROOK RD. WYE RD. WEXFORD DR. WOOD HOLLOW DR. WOODS HOLE DR. WALNUT TRACE WESTRIDGE CIR. WINTERBERRY DR.	E-2 D-2 D-1 A3-E1 D-2 B-5 D-2 C-2 F5 D6 D6 B-1	Y YALE DR.
H MUNSON ELEM. SCHOOL SISTERS OF NOTRE DAME ED. CENTER SISTERS OF NOTRE DAME ED. CENTER WELFARE DEPT. FOWLERS MILLS COMM. CHRISTIAN CH. FOWLERS MILLS CEMETERY	F-3 A3-A5 A-4 B-1 B-1 B2	Y YALE DR.	F-3	

- 1. MUNSON ELEM. SCHOOL
- 2. SISTERS OF NOTRE DAME ED. CENTER
- 3. SISTERS OF NOTRE DAME ED. CENTER
- 4. WELFARE DEPT.
- 5. FOWLERS MILLS COMM. CHRISTIAN CH.
- 6. FOWLERS MILLS CEMETERY
- 7. MAPLE HILL CEMETERY
- 8. GEauga COUNTY SAFETY CENTER
- 9. GEauga CO. COMM. HOSPITAL
- 10. HEATHER HILLING.
- 11. MUNSON TWR. TOWN HALL
- 12. MUNSON VOL. FIRE DEPT.
- 13. ST. LUKE'S EPISCOPAL CHURCH
- 14. PEACE LUTHERAN CH. IRCH

MUNSON TOWNSHIP

SCALE: 1" = 2000'
ROBERT E. PHILLIPS,
GEauga COUNTY ENGINEER

--- UNPAVED ROAD
--- PAVED ROAD
--- RAILROAD
--- TOWNSHIP LINE
--- COUNTY LINE
--- CORPORATION LINE



LAKE

CHARDON

TWP

711-679
2.6 AC
P. W. MAHONEY & B.J. BIGHAM

CHESTER TWP

48.279 Ac.
501-139

546-576
103.80 Ac.
CREATION CENTER, INC.

W. TAYLOR
629-712, 713 40 Ac.

21 Ac.

WEST DIVISION

A. MELINZ
559-1226
92.38 Ac.

All lots except
debar wise noted
to Jay Inv.
589-112

41.886 Ac.
613-1122
1.877 Ac.
1.500 Ac.
1.672 Ac.
M.F. NOVOTNY
877-232 778
D.H. MAIZE
891-1375
1.89 Ac.
B. MALINZ
589-287
1.44 Ac.
A.L.E. MELINZ
645-1165
3.041 Ac.

AMP Gill 400 Ac.
585-1249

17 J.L.A. M.A. FRASCARLI 693-490
18 J.P.E.L. CAMPO 493-406
19 M.S. JOELIN 493-488
20 M.S. JOELIN 493-488
21 J.M. INVESTMENTS 674-1008
22 R.J. LARUS 589-498
23 D.A.C. WEHNES 675-282
24 H.S. JOSEPH 643-488
25 A.P. ROBERT 607-324
26 J.P. CAMPBELL 607-324
27 J.P. CAMPBELL 607-324
28 J.P. CAMPBELL 607-324
29 J.P. CAMPBELL 607-324
30 J.P. CAMPBELL 607-324
31 J.P. CAMPBELL 607-324
32 J.P. CAMPBELL 607-324
33 J.P. CAMPBELL 607-324
34 J.P. CAMPBELL 607-324
35 J.P. CAMPBELL 607-324
36 J.P. CAMPBELL 607-324
37 J.P. CAMPBELL 607-324
38 J.P. CAMPBELL 607-324
39 J.P. CAMPBELL 607-324
40 J.H. CAMPO 643-486
41 E.M. RKE 815-604
42 F.F.S. Charba 591-673
43 M.K. 793-285
44 L.P. 597-108
45 J.P. CAMPBELL 607-324
46 J.P. CAMPBELL 607-324
47 J.L. MEYERSH 643-449
48 J.A. NIKOLSON 678-1349
49 J.S. BOZDA 621-496
50 J.S. BOZDA 619-277

MULBERRY ROAD

ROAD

48.50 Ac.
J.M. NOVOTNY 580-489
J.W. PARR 470-112 101.50
709-1303

A.J. & E.M. BUDABVILA 580-100 3.443 Ac.
P. & J. MARTIN 1270 Ac. 583-293
J.M. NOVOTNY 578-419
R.W.D. ROSIGN 578-112 172 Ac.
M.L. DiFranco 578-1245
J. PROCHAZKA 520 Ac. 578-581
L.J. WEINBERG 683-278
E.M. Hadrick 5.0 Ac.
B. VITTEL 703-794 5.00 Ac.
R.J. Sykora 593-579 8.00 Ac.
M.E. HAGRI 580-619 5.00 Ac.
L.M.A. SCHMIDT 679-688 5.0 Ac.
R.D. CHERNE 580-445 6.204 Ac.

48.8181 Ac.
A. WOODS 260-221
591-982
15.36 Ac.
R.T. WOOD 464-18
48.50 Ac.

48.8181 Ac.
A. WOODS 260-221
591-982
15.36 Ac.
R.T. WOOD 464-18
48.50 Ac.

21
20
19
18
17
16
15
14
LEGEND CREEK DRIVE Vol. 13 Pgs 33-36
LAKE LAND 142
LAKE LAND 27
K.I. CO. KIRK 676-743
195-288
D.S. & M. NATMIK
245-267

100 A.
597-1062
F. MANCINO
500 Ac.
W. WARREN 80.99 Ac.

13 J.A.S. PALB 559-1287 611-542
24 BERNDT 583-1081
2361 Ac.
G.M. DANZ 552-900
4.457 Ac.
G.L. GAURCAN 643-60
4.676 Ac.
M.G. CLARK 559-376 6.371 Ac.
BETTE FRICK 619-878 3.558 Ac.
N.M. SPIES 551-1320 671-1127
4.186 Ac.
J.M. DONOVAN 556-198
4.202 Ac.
242 BERNDT 583-1081
2361 Ac.
G.M. DANZ 552-900
4.457 Ac.
G.L. GAURCAN 643-60
4.676 Ac.
M.G. CLARK 559-376 6.371 Ac.
BETTE FRICK 619-878 3.558 Ac.
N.M. SPIES 551-1320 671-1127
4.186 Ac.
J.M. DONOVAN 556-198
4.202 Ac.



SCALE 1" = 300'

A	B	C	D
E	F	G	H
I	J	K	L
M	N	O	P

MUNSON TWP
JAN. 1, 1984

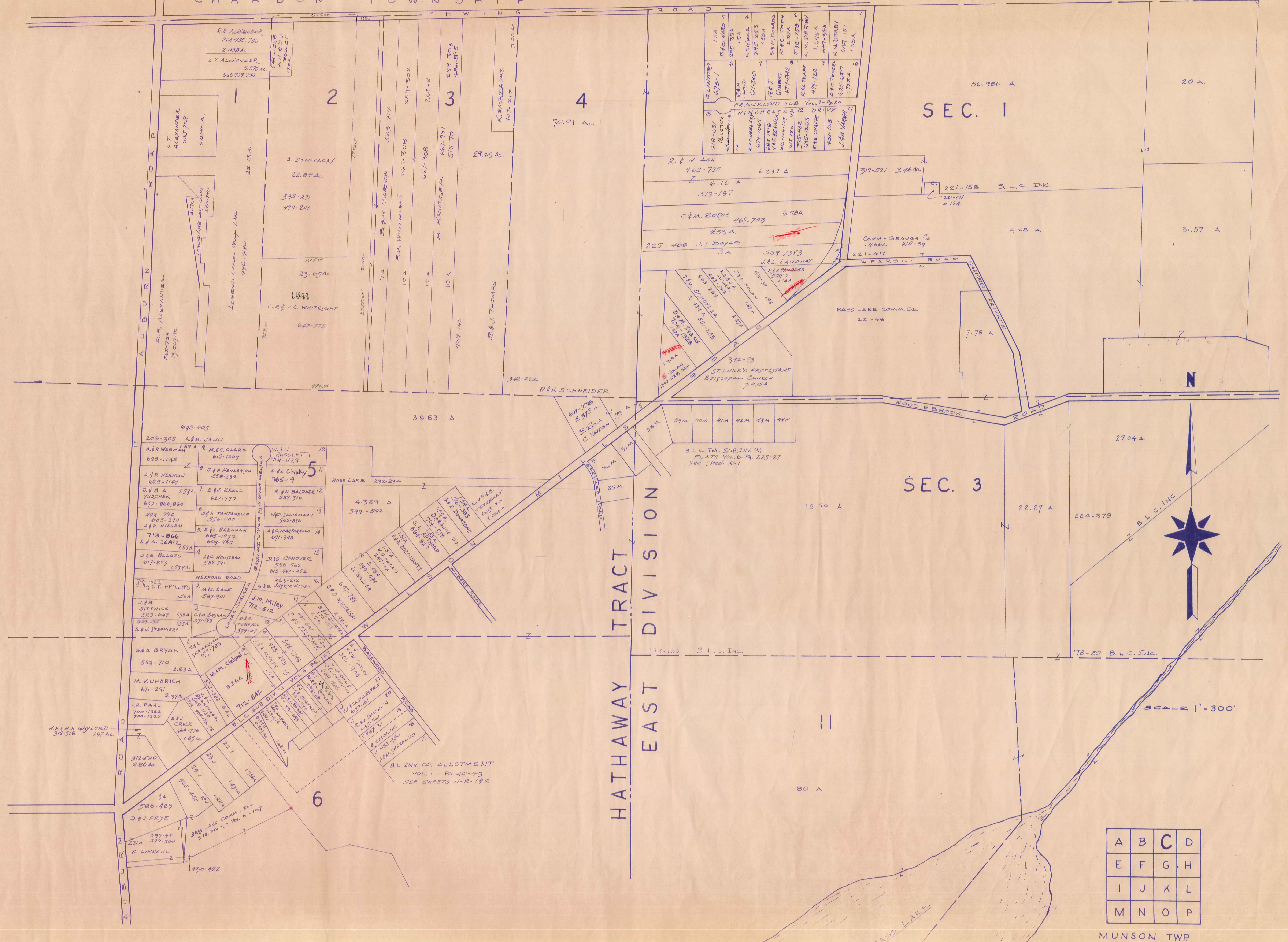
4 WEST DIVISION

HATHAWAY TRACT

SCALE: 1" = 300'



A	B	C	D
E	F	G	H
I	J	K	L
M	N	O	P



SEC. 1

SEC. 3

HATHAWAY EAST DIVISION ROAD

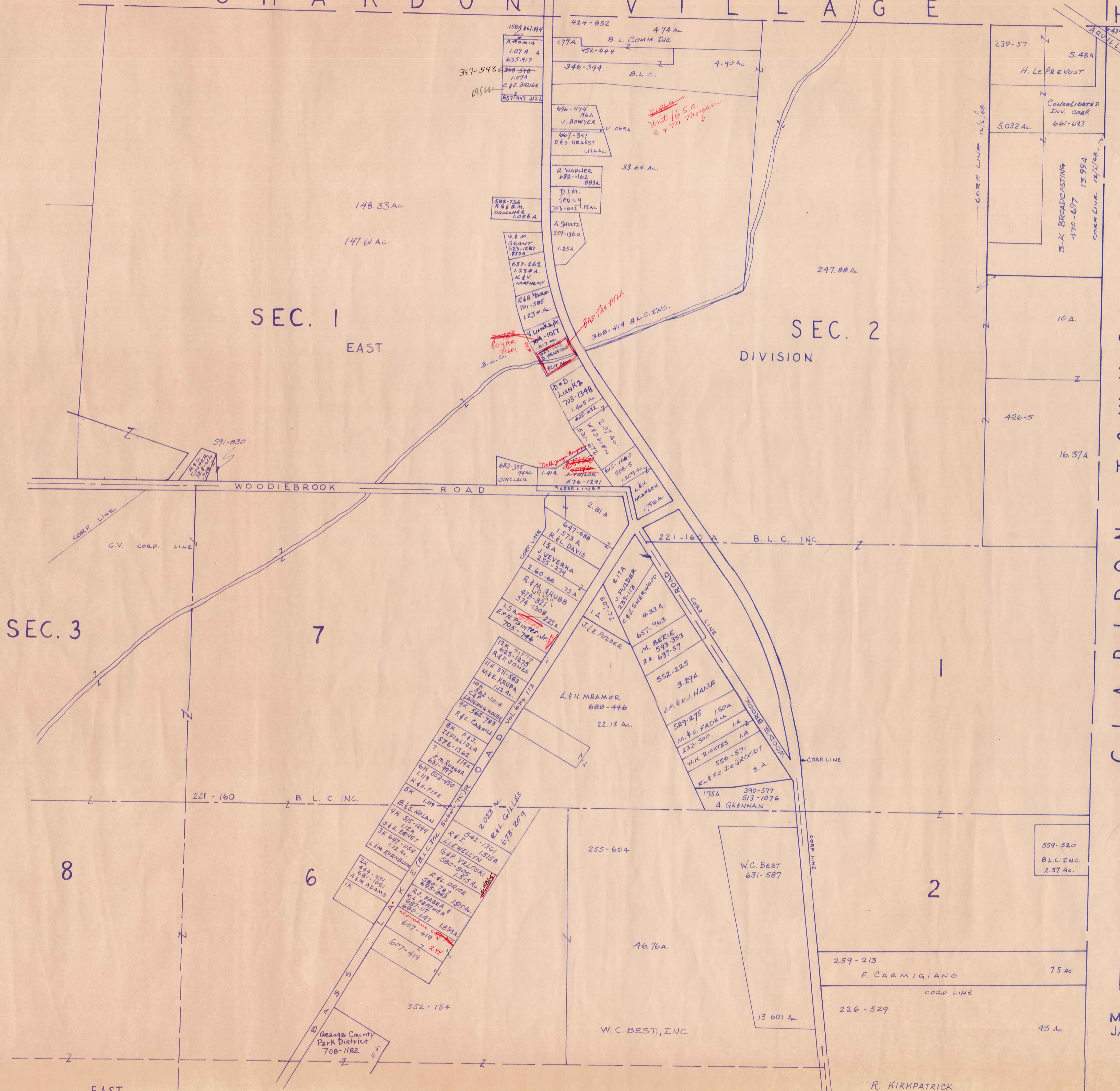


SCALE 1" = 300'

A	B	C	D
E	F	G	H
I	J	K	L
M	N	O	P

CLARIDON VILLAGE

HAMB DEN TWP.



SEC. 1 EAST

SEC. 2 DIVISION

SEC. 3

CLARIDON TOWNSHIP



SCALE 1" = 300'

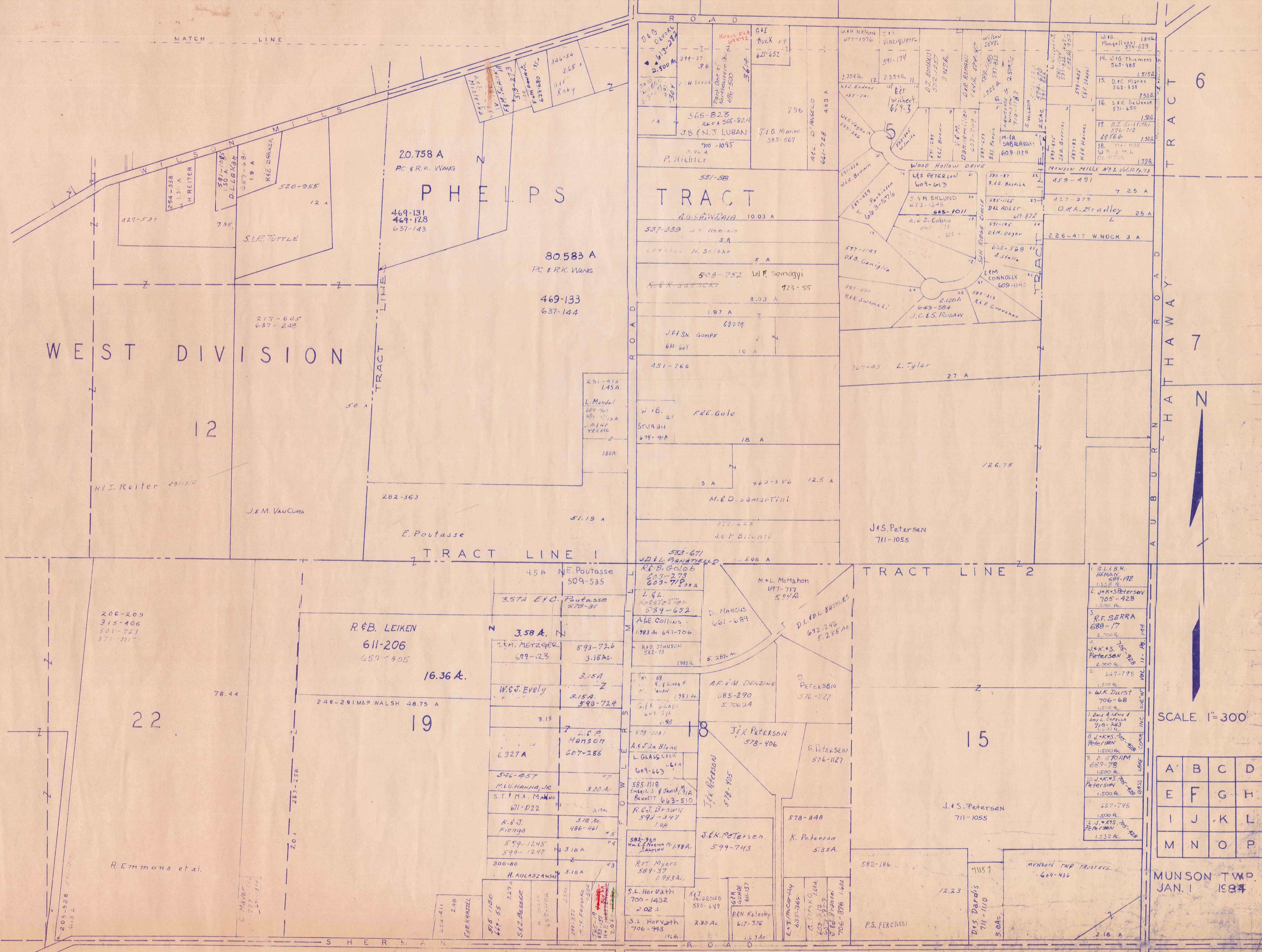
A	B	C	D
E	F	G	H
I	J	K	L
M	N	O	P

MUNSON TWP
JAN. 1 1984

EAST

DIVISION

R. KIRKPATRICK



WEST DIVISION

PHELPS TRACT

TRACT 6

TRACT 7

TRACT 12

TRACT 15

SCALE 1"=300'

A	B	C	D
E	F	G	H
I	J	K	L
M	N	O	P

MUNSON TWP. JAN. 1 1884

12

22

23

19

15

20.758 A
PC & R.K. WANG
469-131
469-128
637-143

80.583 A
PC & R.K. WANG
469-133
637-144

57.19 A
E. Poutasse
282-363

16.36 A.
R. & B. LEIKEN
611-206
657-405

3.58 A.
T.M. METZGER
593-726
699-123
3.16 Ac.

3.15 A
W.C. Evely
598-724

3.27 A
L.E.P. HANSON
607-286

3.20 A
M.L. HANNA, JR.
S.T. & M.A. MANN
671-022

3.18 Ac.
K. & J. Fienga
486-461

3.18 A
599-1245
599-1247

3.18 A
300-60
H. KOLASZANSKI

3.27 A
S.A.Z. BASSER

3.27 A
S.A.Z. BASSER

3.27 A
S.A.Z. BASSER

3.27 A
S.A.Z. BASSER

3.27 A
S.A.Z. BASSER

3.27 A
S.A.Z. BASSER

3.27 A
S.A.Z. BASSER

3.27 A
S.A.Z. BASSER

3.27 A
S.A.Z. BASSER

3.27 A
S.A.Z. BASSER

3.27 A
S.A.Z. BASSER

3.27 A
S.A.Z. BASSER

3.27 A
S.A.Z. BASSER

3.27 A
S.A.Z. BASSER

3.27 A
S.A.Z. BASSER

3.27 A
S.A.Z. BASSER

3.27 A
S.A.Z. BASSER

3.27 A
S.A.Z. BASSER

3.27 A
S.A.Z. BASSER

3.27 A
S.A.Z. BASSER

3.27 A
S.A.Z. BASSER

3.27 A
S.A.Z. BASSER

3.27 A
S.A.Z. BASSER

3.27 A
S.A.Z. BASSER

3.27 A
S.A.Z. BASSER

3.27 A
S.A.Z. BASSER

3.27 A
S.A.Z. BASSER

3.27 A
S.A.Z. BASSER

3.27 A
S.A.Z. BASSER

3.27 A
S.A.Z. BASSER

3.27 A
S.A.Z. BASSER

3.27 A
S.A.Z. BASSER

3.27 A
S.A.Z. BASSER

3.27 A
S.A.Z. BASSER

3.27 A
S.A.Z. BASSER

3.27 A
S.A.Z. BASSER

3.27 A
S.A.Z. BASSER

3.27 A
S.A.Z. BASSER

3.27 A
S.A.Z. BASSER

3.27 A
S.A.Z. BASSER

3.27 A
S.A.Z. BASSER

3.27 A
S.A.Z. BASSER

3.27 A
S.A.Z. BASSER

3.27 A
S.A.Z. BASSER

3.27 A
S.A.Z. BASSER

3.27 A
S.A.Z. BASSER

3.27 A
S.A.Z. BASSER

3.27 A
S.A.Z. BASSER

3.27 A
S.A.Z. BASSER

3.27 A
S.A.Z. BASSER

3.27 A
S.A.Z. BASSER

3.27 A
S.A.Z. BASSER

3.27 A
S.A.Z. BASSER

3.27 A
S.A.Z. BASSER

3.27 A
S.A.Z. BASSER

3.27 A
S.A.Z. BASSER

3.27 A
S.A.Z. BASSER

3.27 A
S.A.Z. BASSER

3.27 A
S.A.Z. BASSER

3.27 A
S.A.Z. BASSER

3.27 A
S.A.Z. BASSER

3.27 A
S.A.Z. BASSER

3.27 A
S.A.Z. BASSER

3.27 A
S.A.Z. BASSER

3.27 A
S.A.Z. BASSER

3.27 A
S.A.Z. BASSER

3.27 A
S.A.Z. BASSER

3.27 A
S.A.Z. BASSER

3.27 A
S.A.Z. BASSER

3.27 A
S.A.Z. BASSER

3.27 A
S.A.Z. BASSER

3.27 A
S.A.Z. BASSER

3.27 A
S.A.Z. BASSER

3.27 A
S.A.Z. BASSER

3.27 A
S.A.Z. BASSER

3.27 A
S.A.Z. BASSER

3.27 A
S.A.Z. BASSER

3.27 A
S.A.Z. BASSER

3.27 A
S.A.Z. BASSER

3.27 A
S.A.Z. BASSER

3.27 A
S.A.Z. BASSER

3.27 A
S.A.Z. BASSER

3.27 A
S.A.Z. BASSER

3.27 A
S.A.Z. BASSER

3.27 A
S.A.Z. BASSER

3.27 A
S.A.Z. BASSER

3.27 A
S.A.Z. BASSER

3.27 A
S.A.Z. BASSER

3.27 A
S.A.Z. BASSER

3.27 A
S.A.Z. BASSER

3.27 A
S.A.Z. BASSER

3.27 A
S.A.Z. BASSER

3.27 A
S.A.Z. BASSER

3.27 A
S.A.Z. BASSER

3.27 A
S.A.Z. BASSER

3.27 A
S.A.Z. BASSER

3.27 A
S.A.Z. BASSER

3.27 A
S.A.Z. BASSER

3.27 A
S.A.Z. BASSER

3.27 A
S.A.Z. BASSER

3.27 A
S.A.Z. BASSER

3.27 A
S.A.Z. BASSER

3.27 A
S.A.Z. BASSER

3.27 A
S.A.Z. BASSER

3.27 A
S.A.Z. BASSER

3.27 A
S.A.Z. BASSER

3.27 A
S.A.Z. BASSER

3.27 A
S.A.Z. BASSER

3.27 A
S.A.Z. BASSER

3.27 A
S.A.Z. BASSER

3.27 A
S.A.Z. BASSER

3.27 A
S.A.Z. BASSER

3.27 A
S.A.Z. BASSER

3.27 A
S.A.Z. BASSER

3.27 A
S.A.Z. BASSER

3.27 A
S.A.Z. BASSER

3.27 A
S.A.Z. BASSER

3.27 A
S.A.Z. BASSER

3.27 A
S.A.Z. BASSER

3.27 A
S.A.Z. BASSER

3.27 A
S.A.Z. BASSER

3.27 A
S.A.Z. BASSER

3.27 A
S.A.Z. BASSER

3.27 A
S.A.Z. BASSER

3.27 A
S.A.Z. BASSER

3.27 A
S.A.Z. BASSER

3.27 A
S.A.Z. BASSER

3.27 A
S.A.Z. BASSER

3.27 A
S.A.Z. BASSER

3.27 A
S.A.Z. BASSER

3.27 A
S.A.Z. BASSER

3.27 A
S.A.Z. BASSER

3.27 A
S.A.Z. BASSER

3.27 A
S.A.Z. BASSER

3.27 A
S.A.Z. BASSER

3.27 A
S.A.Z. BASSER

3.27 A
S.A.Z. BASSER

3.27 A
S.A.Z. BASSER

3.27 A
S.A.Z. BASSER

3.27 A
S.A.Z. BASSER

3.27 A
S.A.Z. BASSER

3.27 A
S.A.Z. BASSER

3.27 A
S.A.Z. BASSER

3.27 A
S.A.Z. BASSER

3.27 A
S.A.Z. BASSER

3.27 A
S.A.Z. BASSER

3.27 A
S.A.Z. BASSER

3.27 A
S.A.Z. BASSER

3.27 A
S.A.Z. BASSER

3.27 A
S.A.Z. BASSER

3.27 A
S.A.Z. BASSER

3.27 A
S.A.Z. BASSER

3.27 A
S.A.Z. BASSER

3.27 A
S.A.Z. BASSER

3.27 A
S.A.Z. BASSER

3.27 A
S.A.Z. BASSER

3.27 A
S.A.Z. BASSER

3.27 A
S.A.Z. BASSER

3.27 A
S.A.Z. BASSER

3.27 A
S.A.Z. BASSER

3.27 A
S.A.Z. BASSER

3.27 A
S.A.Z. BASSER

3.27 A
S.A.Z. BASSER

3.27 A
S.A.Z. BASSER

3.27 A
S.A.Z. BASSER

3.27 A
S.A.Z. BASSER

3.27 A
S.A.Z. BASSER

3.27 A
S.A.Z. BASSER

3.27 A
S.A.Z. BASSER

3.27 A
S.A.Z. BASSER

3.27 A
S.A.Z. BASSER

3.27 A
S.A.Z. BASSER

3.27 A
S.A.Z. BASSER

3.27 A
S.A.Z. BASSER

3.27 A
S.A.Z. BASSER

3.27 A
S.A.Z. BASSER

3.27 A
S.A.Z. BASSER

3.27 A
S.A.Z. BASSER

3.27 A
S.A.Z. BASSER

EAST DIVISION

A. L. SCHIEMANN

547 A
 702-1250
 702-1252
 J.C. (C.R. 111)
 H. F. Dwyer
 1,545 A
 653-118
 H.F. Dwyer
 315-676
 1,541 A
 A.M. OPIC
 705-1350
 1,541 A
 97-548
 GUYMA HAYDEN
 701-631
 1,541 A
 452-913
 A.E. Kennedy
 J.R. Ross
 604
 459-538
 451-558
 J.V. Ross
 667-782
 15L
 150 A
 H.W. ROBERTSON
 332-227 14L
 150 A
 V. GAVENOR
 505-282 13L
 150 A
 R.E. McEwen
 257-752
 150 A
 H.M. RONARD
 425-137 11L
 200-245
 W.C. Matherum
 277-224 10L
 500(1.50) A-214
 W.F. RATUSE
 34-78
 505-550
 L.F. LITTLE
 508-134
 G.R. GREGORIC
 2,584
 1,674 A
 J.F. GORRIS
 518-315
 1,534 A

114-456
 177 A
 B.D.E. INTIHAR
 185 PEEFET
 T.L. JOHNSON
 113-191
 R. JOHNSON
 612
 418-114

REV. GORRIS
 546-1206
 599-1279
 B.W. Patterson
 100-114
 505-124
 D.R. CAMERON
 1614
 21-07-07
 B.W. SCHIKOWSKI
 1137 A
 336-218
 100-114

177-561
 177-62
 1189 A
 1751 A
 234-85
 177-509

B. L. C. INC.

40.38 A

B. L. C. INC.

156.17 A

8

TRACT 1 B. L. C. INC.

98.64 A

B. L. C. INC.

14

69.47 A

B. L. C. INC.

HATHAWAY TRACT EAST DIVISION

EAST DIVISION

BASS LAKE

BASS LAKE RESERVE CO. ALLOTMENT VOL. 1 - PG. 64-5-6-7

B. L. R. CO.

B. L. C. INC.

9

10

TRACT 2

3.52 A

4.5 A

45.23 A

7

437-377
3.35 A

341-587
B.L.C. INC.

A	B	C	D
E	F	G	H
I	J	K	L
M	N	O	P

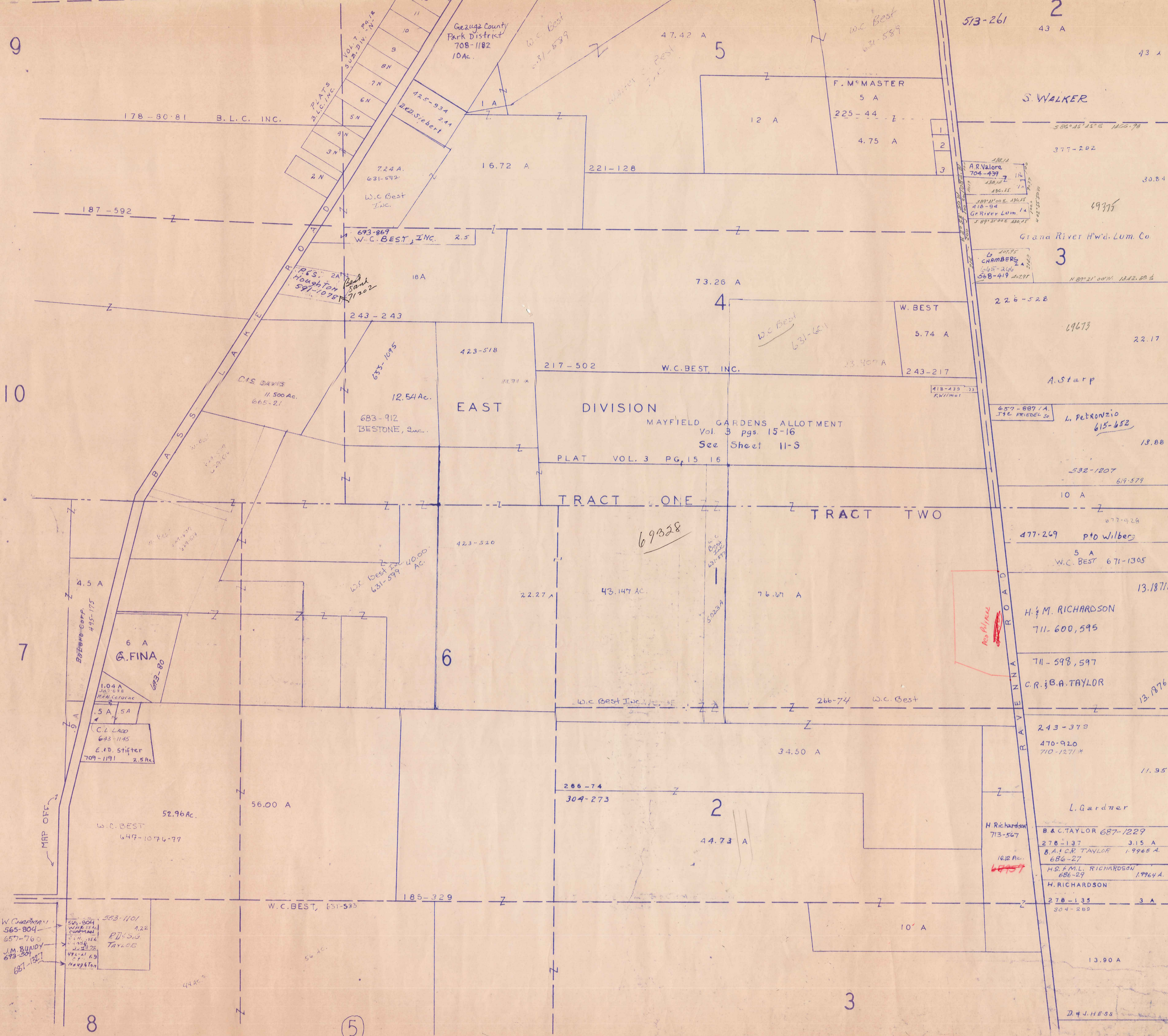
MUNSON TWP. SCALE 1"=300'

JAN. 1, 1984

SHERMAN ROAD

BASS LAKE ROAD





R.F. McMASTER 492-444
 J.P. L. Chapman 562-386
 J.R.A. Chairman 684-1253

C L A R I D O N T O W N S H I P



SCALE 1"=300'

A	B	C	D
E	F	G	H
I	J	K	L
M	N	O	P

MUNSON TWP.
 JAN 1, 1984

L. & W. CHAPMAN
 565-804
 657-760
 J.M. BUNDY
 673-301
 681-1881

565-904
 W.A. BUNDY
 657-760
 J.M. BUNDY
 673-301
 681-1881

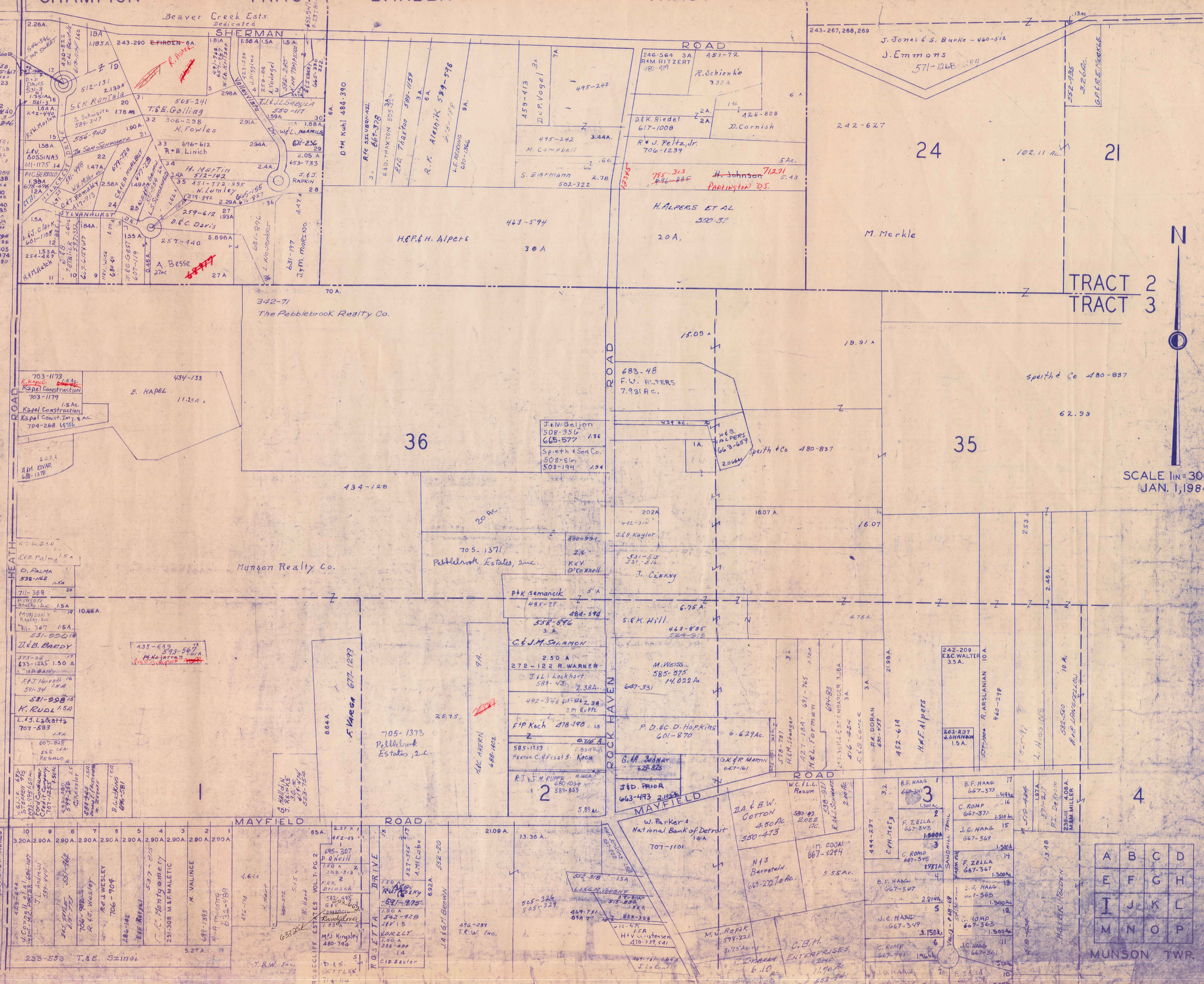
8

5

3

CHAMPION TRACT BARBER TRACT

CHESTER TOWNSHIP



24 21

TRACT 2
TRACT 3

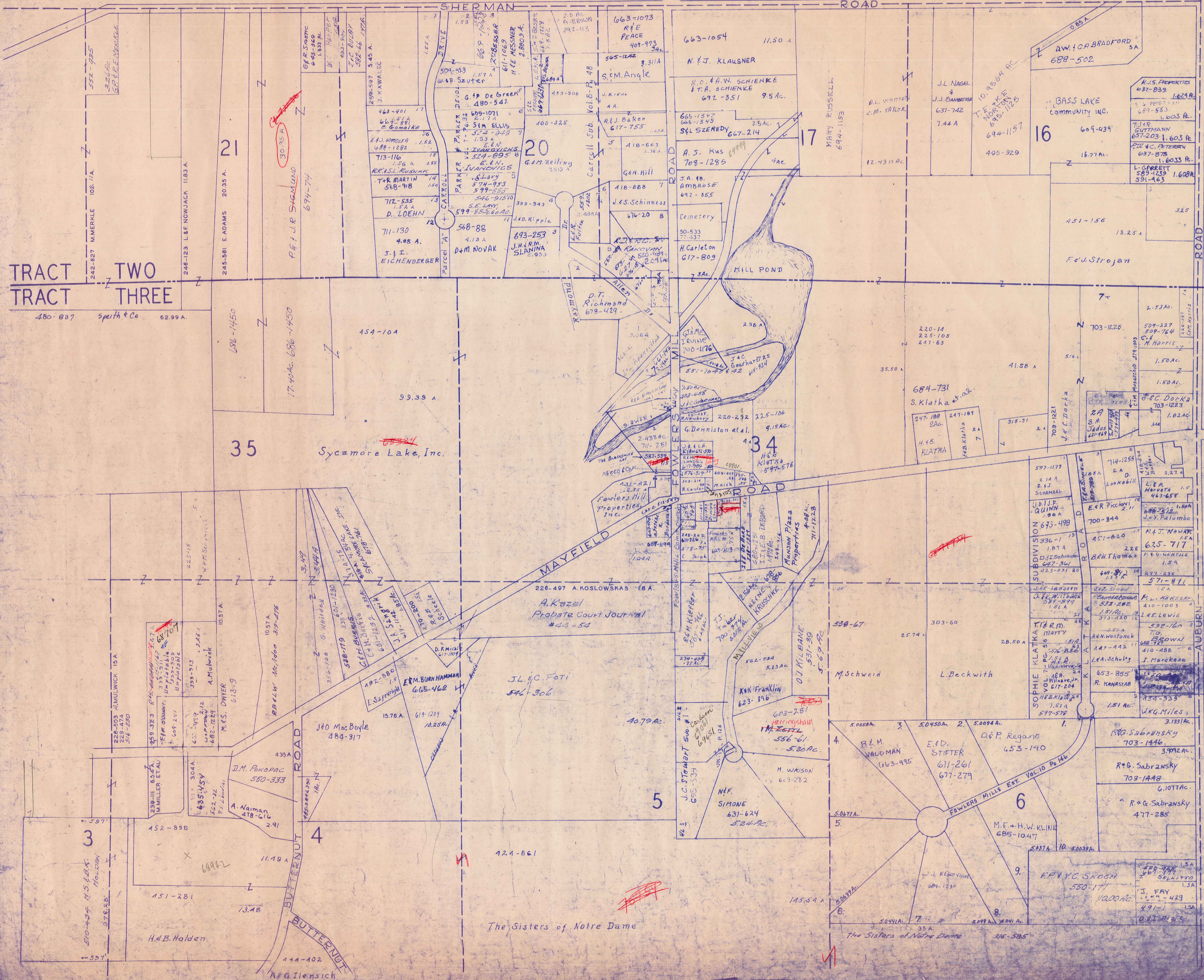
SCALE 1 in = 300 FT
JAN. 1, 1984

A	B	C	D
E	F	G	H
I	J	K	L
M	N	O	P

MUNSON TWP.

- 125-451 B.C. 657
- 126-452 B.C. 657
- 127-453 B.C. 657
- 128-454 B.C. 657
- 129-455 B.C. 657
- 130-456 B.C. 657
- 131-457 B.C. 657
- 132-458 B.C. 657
- 133-459 B.C. 657
- 134-460 B.C. 657
- 135-461 B.C. 657
- 136-462 B.C. 657
- 137-463 B.C. 657
- 138-464 B.C. 657
- 139-465 B.C. 657
- 140-466 B.C. 657
- 141-467 B.C. 657
- 142-468 B.C. 657
- 143-469 B.C. 657
- 144-470 B.C. 657
- 145-471 B.C. 657
- 146-472 B.C. 657
- 147-473 B.C. 657
- 148-474 B.C. 657
- 149-475 B.C. 657
- 150-476 B.C. 657
- 151-477 B.C. 657
- 152-478 B.C. 657
- 153-479 B.C. 657
- 154-480 B.C. 657
- 155-481 B.C. 657
- 156-482 B.C. 657
- 157-483 B.C. 657
- 158-484 B.C. 657
- 159-485 B.C. 657
- 160-486 B.C. 657
- 161-487 B.C. 657
- 162-488 B.C. 657
- 163-489 B.C. 657
- 164-490 B.C. 657
- 165-491 B.C. 657
- 166-492 B.C. 657
- 167-493 B.C. 657
- 168-494 B.C. 657
- 169-495 B.C. 657
- 170-496 B.C. 657
- 171-497 B.C. 657
- 172-498 B.C. 657
- 173-499 B.C. 657
- 174-500 B.C. 657

VOL. 4 - PG. 33 - 4 VALLEY VIEW ACRES



TRACT TWO TRACT THREE

35

Sycamore Lake, Inc.

A. Kozel
Probate Court Journal
#44-54

J.L. & C. Foti
546-306

J&O MacBoyle
484-317

D.M. Pokopac
550-333

A. Naiman
478-616

H.B. Holden

A.G. Ziensich

The Sisters of Notre Dame

The Sisters of Notre Dame

172.105
#1 Fowlers Mills, 520-467, 101, 34
#2 Munson Fire Dept. 255-580 Lot 34
#3-580295 J.M. DA.
LUCKY - LOT #34

SCALE 1"=300'
JAN. 1, 1984

A	B	C	D
E	F	G	H
I	J	K	L
M	N	O	P

MUNSON TWP

SHERMAN ROAD

TRACT 2
TRACT 3

TRACT 2
TRACT 3

ROAD

MAYFIELD ROAD

AUBURN ROAD

F.J. & M.E. MILLER
552-1054
3.23 AC

R.D. & L. PROFFER JR.
597-759
1.72 AC

W.M.
36.33 AC
F.T. PINK
483-929

13
20 AC

D. A. OSBORNE
601-1072
5.86 AC

12

Heather Hill Inc.
5.228 AC

G. HAZEN
611-567
5 AC

8

492-535
C.F.A.
S.S. ROYAN
1.66 AC

P.E. MENNY
515-165
3.58 AC

A.O. TITGEMEIR
601-1081
5.71 AC

295-258
635-658
B. JACKSON

15.98 AC

24.63 AC

199-227
Gray Horse, Inc. 625-1834 & 627-8

341-100
625-1834 & 627-8

18.69 AC
Gray Horse, Inc. 625-1834 & 627-8

M. MOORE
297-490

10 AC
G.F. PAOLUCCI
671-980

39.5-47

50.60 AC

32

308-194
M.M. Triplett
492-889
1.75 AC

R. VIDRA
597-804
1.78 AC

J.K. HAZEN
597-244
1.78 AC

R. & L. Williams

33

459-447
561
J. Triplett et al.
310

4.47 AC

496-674
32.25 AC
J. Osborn et al.
C.J. TITGEMEIR

10.76 AC
744-392

14.17 AC

7.17 AC
208-437,440

603-1149
5.100 AC
D.E.L. KOCI

B.E. & M.E. URGHART
637-939
5.005 AC

J. & E. Van de Motter
589-935
5.43 AC

665-1092
676-1001
D.A. W. E. FERDMAN
2.085 AC

520-1092
550-1216
V.V. McDONALD
34.752 AC

86.68 AC

R. STONE
218-587
81.535 AC

81.54 AC

38.61 AC

5.100 AC
T.S. CLAYTON
705-476
5.105 AC

K.R. & L.B. LONGO
599-891
5.393 AC

D.A. Mortello
591-478
1.722 AC

587-257
ANNETT R. DEBRA A. McKNILL
1.722 AC

587-327
T.M. A. KROUTH D. STRICKMAN
1.722 AC

587-325
DALE D. RATH A. FELLINGER
1.722 AC

587-347
WALTER J. & JANN M. POOL
1.722 AC

D.E. & S. OSKEL
623-1281
1.722 AC

D.A.L. Gustafson
713-441
5 AC

683-923
R.C. WOHL-SCHLAGER
2 AC

345-507
E.O. Vese
1.5 AC

677-200
102-20, 15, 15
M. Telling
C. Telling
708-150
.0707 AC

V. McDONALD
6 AC
550-1216
245-121

7

663-1122

V. NOZAR
26.56 AC

32.78 AC

6 AC
162-61
R.D. VARNEY

R.Q. VARNEY
665-1248

218-587

286-181 R.O. Stone

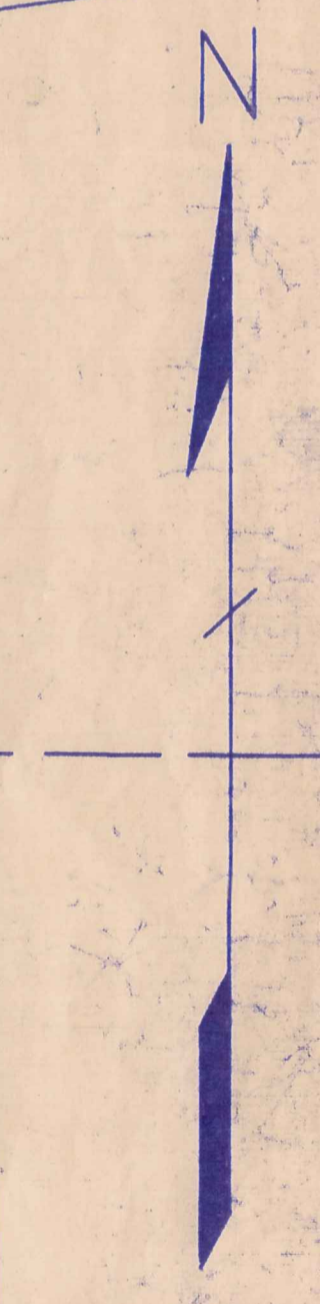
50 AC

R. Stone

MATCH LINE

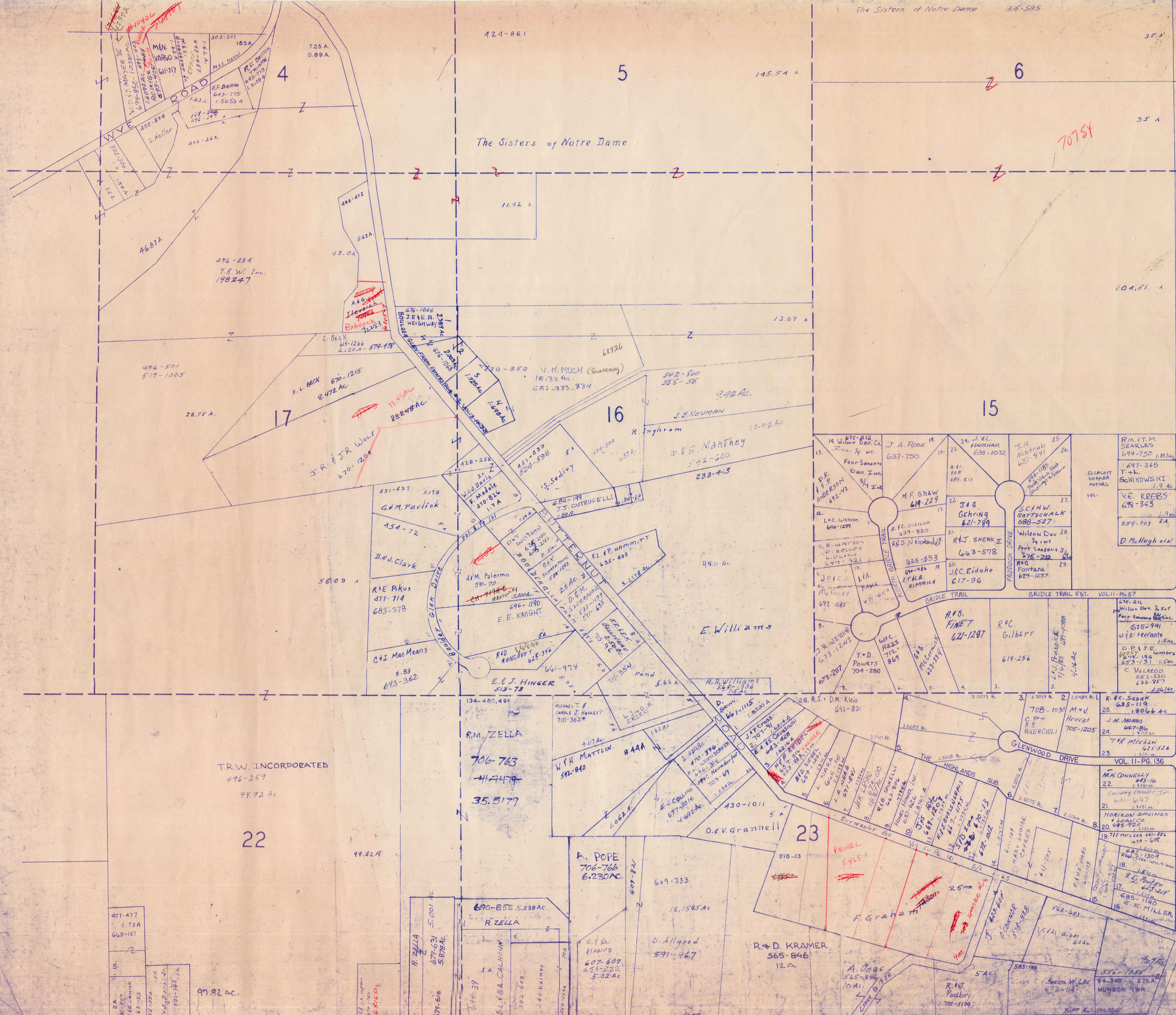
296-300

283-476 THE SISTERS OF NOTRE DAME
5 AC



A	B	C	D
E	F	G	H
I	J	K	L
M	N	O	P

SCALE 1" = 300'
MUNSON TWP
JAN. 1 1984



BEAN ROAD

TRACT 3

WYER ROAD

SCALE 1"=300 FT. JAN. 1, 1984

A	B	C	D
E	F	G	H
I	J	K	L
M	N	O	P

MUNSON TWP.



TR.W. INCORPORATED
496-259
94.92 Ac

22

R.M. ZELLA
706-763
417479
35.5179

A. POPE
706-766
6.230 AC.

23

R. & D. KRAMER
565-846
12 A

M.K. CONNELLY
643-16
1.831 AC

HORIZON SAVINGS
1000 CO
20 685-920

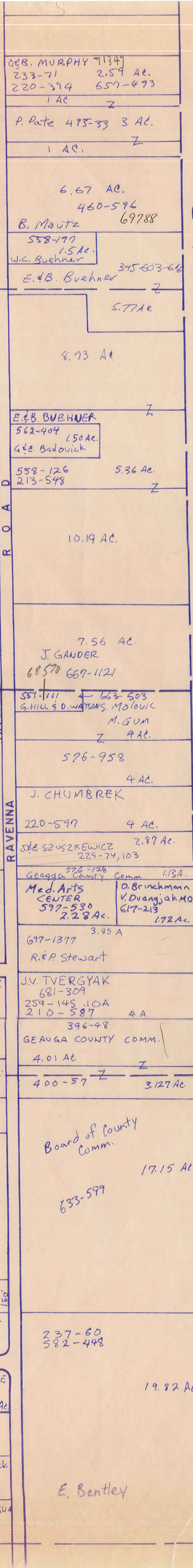
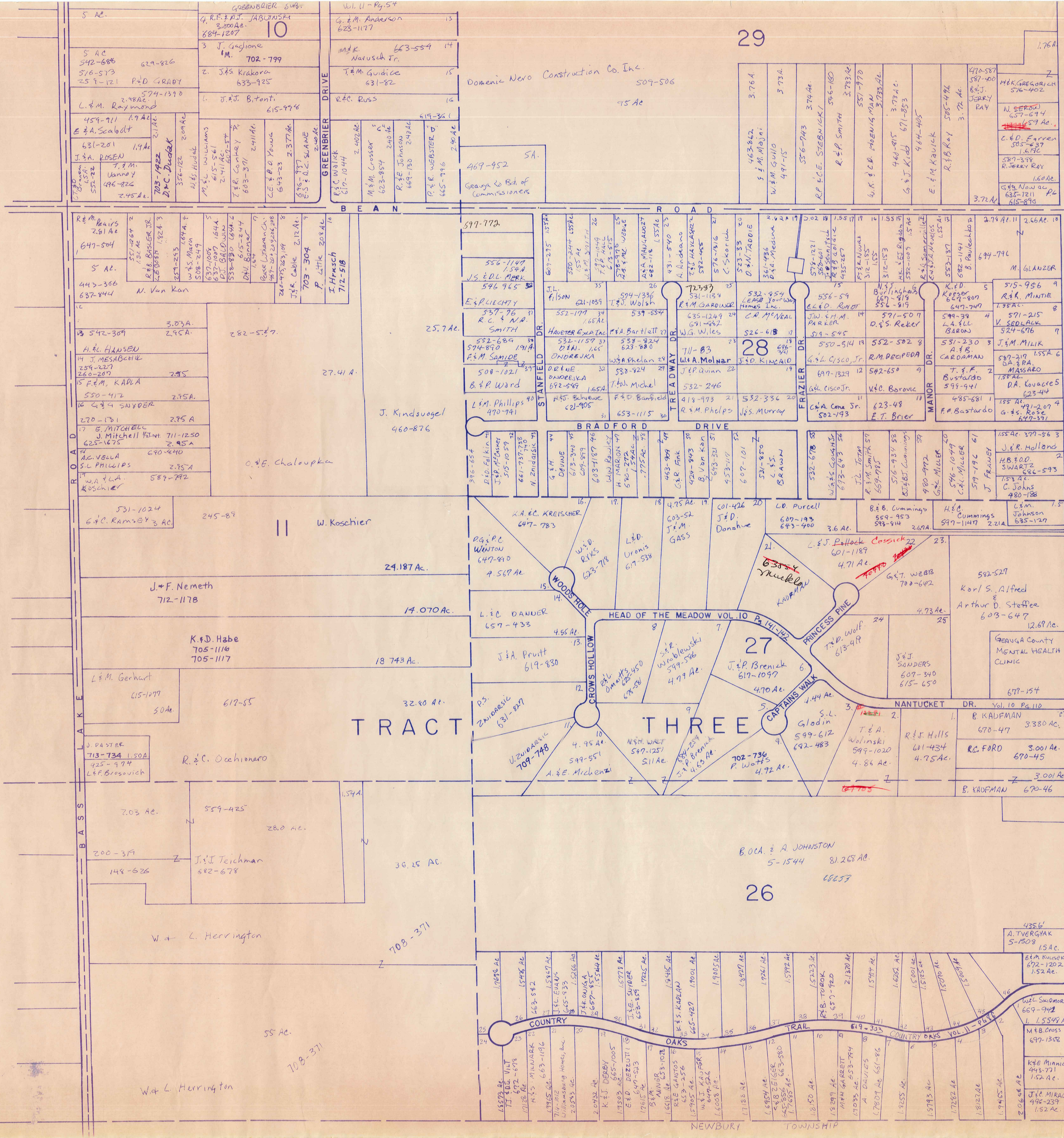
556-1035
94.340 275 A
MUNSON TWP.

9

29

12

25

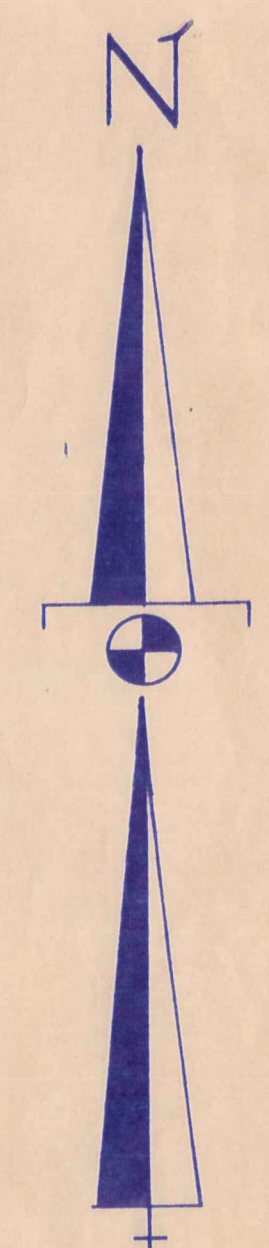


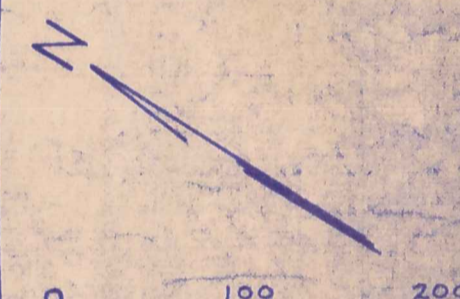
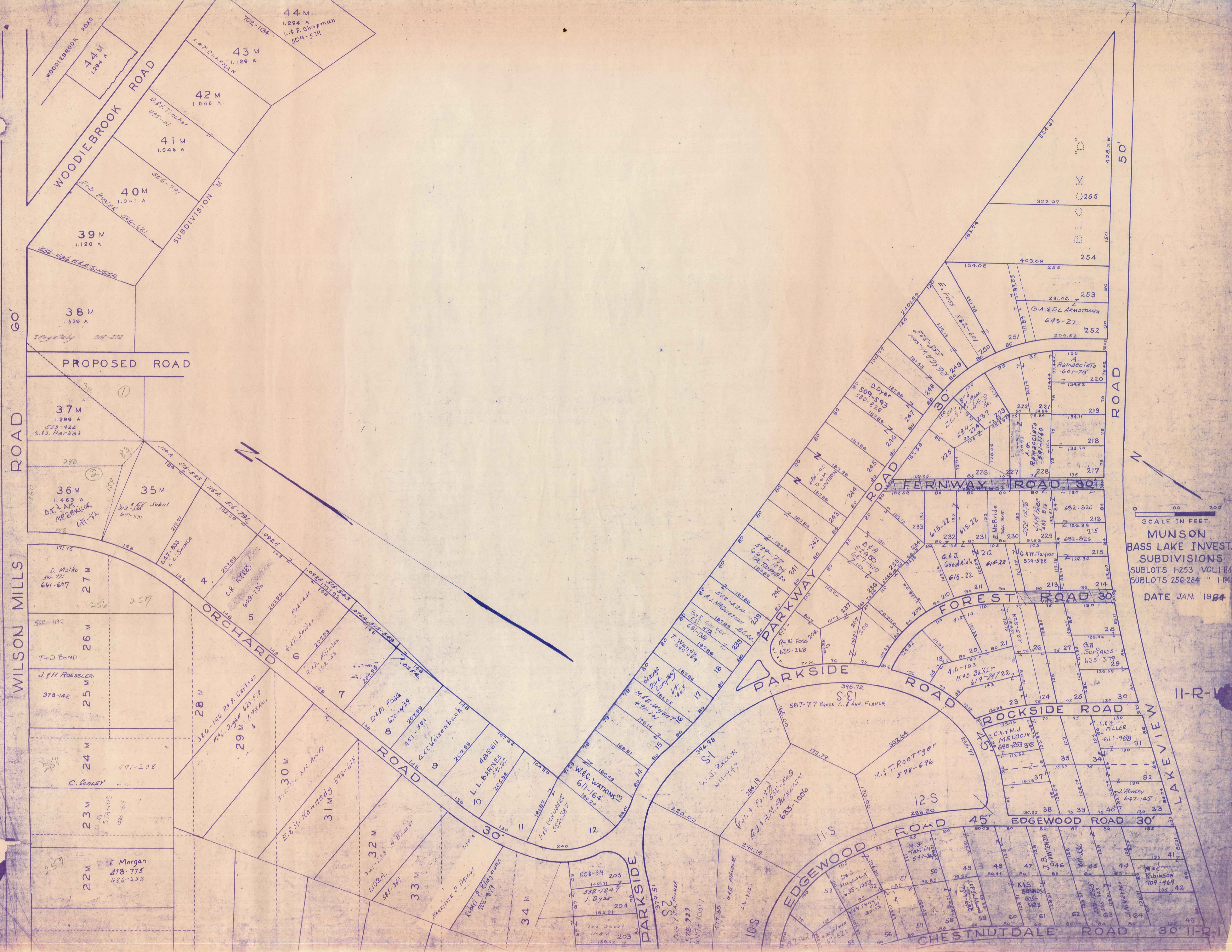
C L A R I D O N T O W N S H I P

A	B	C	D
E	F	G	H
I	J	K	L
M	N	O	P

MUNSON TOWNSHIP

SCALE: 1" = 300'
JAN. 1, 1984





SCALE IN FEET
0 100 200

MUNSON
BASS LAKE INVEST.
SUBDIVISIONS
SUBLOTS 1-253 VOL. 1-R4
SUBLOTS 256-284 " 1-R42
DATE JAN. 1984

11-R-1

LAKELAVIEW

WILSON MILLS ROAD

WOODIEBROOK ROAD

PROPOSED ROAD

ORCHARD ROAD

PARKSIDE ROAD

PARKSIDE ROAD

PARKWAY ROAD

FOREST ROAD

ROCKSIDE ROAD

EDGEWOOD ROAD

CHESTNUTDALE ROAD

BLOCK

50'

N

N

44 M
1,294 A
L.P.P. Chapman
509-579

43 M
1,129 A

42 M
1,046 A

41 M
1,046 A

40 M
1,043 A

39 M
1,120 A

38 M
1,539 A

37 M
1,299 A
G.S. Harbak

36 M
1,463 A
D.L. AM. MEZENEKOR
691-42

35 M
1,154 A
E. Sakol
691-570

27 M
591-721
D. Malko
641-607

26 M
542-1192
T+D BOND

25 M
378-142
J.H. PROESSLER

24 M
591-205
C. CONLEY

23 M
P+G STANDS
585-609

22 M
178-775
486-238
E. Morgan

37 M
1,299 A
G.S. Harbak

36 M
1,463 A
D.L. AM. MEZENEKOR
691-42

35 M
1,154 A
E. Sakol
691-570

27 M
591-721
D. Malko
641-607

26 M
542-1192
T+D BOND

25 M
378-142
J.H. PROESSLER

24 M
591-205
C. CONLEY

23 M
P+G STANDS
585-609

22 M
178-775
486-238
E. Morgan

27 M
591-721
D. Malko
641-607

26 M
542-1192
T+D BOND

25 M
378-142
J.H. PROESSLER

24 M
591-205
C. CONLEY

23 M
P+G STANDS
585-609

22 M
178-775
486-238
E. Morgan

29 M
326-146 P.A. Caylson
M.C. Melocik
625-510
1,493 AC.

28 M
677-510
G.F.P. Schaber
207-99

27 M
591-721
D. Malko
641-607

26 M
542-1192
T+D BOND

25 M
378-142
J.H. PROESSLER

24 M
591-205
C. CONLEY

23 M
P+G STANDS
585-609

22 M
178-775
486-238
E. Morgan

29 M
326-146 P.A. Caylson
M.C. Melocik
625-510
1,493 AC.

28 M
677-510
G.F.P. Schaber
207-99

27 M
591-721
D. Malko
641-607

26 M
542-1192
T+D BOND

25 M
378-142
J.H. PROESSLER

24 M
591-205
C. CONLEY

23 M
P+G STANDS
585-609

22 M
178-775
486-238
E. Morgan

29 M
326-146 P.A. Caylson
M.C. Melocik
625-510
1,493 AC.

28 M
677-510
G.F.P. Schaber
207-99

27 M
591-721
D. Malko
641-607

26 M
542-1192
T+D BOND

25 M
378-142
J.H. PROESSLER

24 M
591-205
C. CONLEY

23 M
P+G STANDS
585-609

22 M
178-775
486-238
E. Morgan

29 M
326-146 P.A. Caylson
M.C. Melocik
625-510
1,493 AC.

28 M
677-510
G.F.P. Schaber
207-99

27 M
591-721
D. Malko
641-607

26 M
542-1192
T+D BOND

25 M
378-142
J.H. PROESSLER

24 M
591-205
C. CONLEY

23 M
P+G STANDS
585-609

22 M
178-775
486-238
E. Morgan

29 M
326-146 P.A. Caylson
M.C. Melocik
625-510
1,493 AC.

28 M
677-510
G.F.P. Schaber
207-99

27 M
591-721
D. Malko
641-607

26 M
542-1192
T+D BOND

25 M
378-142
J.H. PROESSLER

24 M
591-205
C. CONLEY

23 M
P+G STANDS
585-609

22 M
178-775
486-238
E. Morgan

29 M
326-146 P.A. Caylson
M.C. Melocik
625-510
1,493 AC.

28 M
677-510
G.F.P. Schaber
207-99

27 M
591-721
D. Malko
641-607

26 M
542-1192
T+D BOND

25 M
378-142
J.H. PROESSLER

24 M
591-205
C. CONLEY

23 M
P+G STANDS
585-609

22 M
178-775
486-238
E. Morgan

ROAD

60'

WILSON MILLS



ALL LOT NUMBERS FOLLOWED BY "J" = BASS LAKE COMM. INC.,
SUB. DIV. VOL. 6 - PG. 187

All Parcels Not Having Name
Thereon Stand In Name Of
Bass Lake Comm. Inc.

SCALE IN FEET
MUNSON
BASS LAKE INVEST.
SUBDIVISIONS
SUBLOTS 1-253 VOL. 1-P40
SUBLOTS 256-284 " 1-P42
SUBLOTS 158-162 " 2-P3
DATE, JAN. 1984

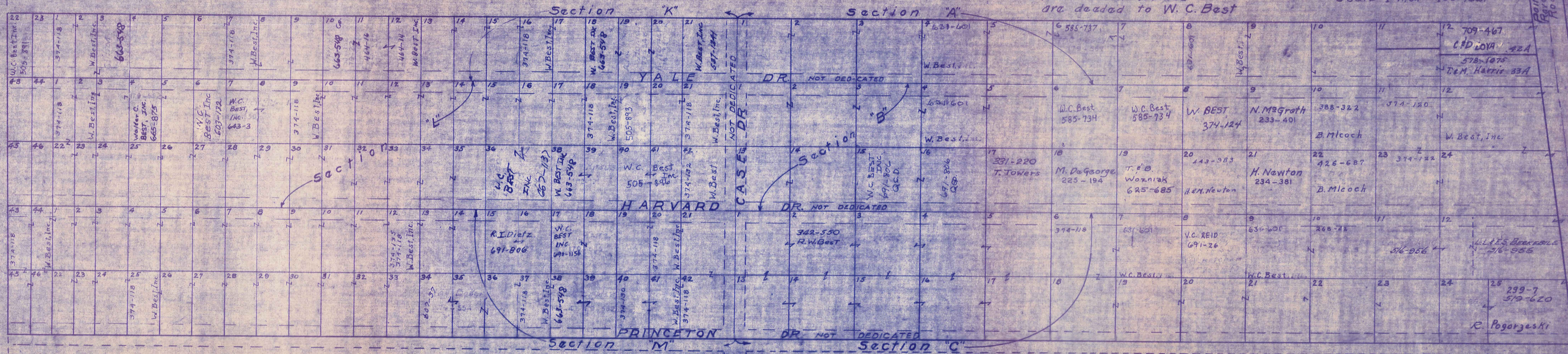
MAYFIELD

GARDENS - Subdivision No 1

Note: All lots not named are deeded to W. C. Best

Scale 1 inch = 100 feet

Boimessville
Riverton Rd



WALTER C. BEST INC.

SEC. K		SEC. L		SEC. M	
LOT	VOL. & PAGE	LOT	VOL. & PAGE	LOT	VOL. & PAGE
1	232 434	232	434	232	434
2	259 488	"	"	"	"
3	232 434	"	"	"	"
4	"	"	"	"	"
5	"	"	"	"	"
6	"	"	"	"	"
7	"	"	"	"	"
8	"	"	"	"	"
9	"	"	"	"	"
10	"	"	"	"	"
11	"	"	"	"	"
12	"	"	"	"	"
13	"	"	"	"	"
14	"	"	"	"	"
15	"	"	"	"	"
16	"	"	"	"	"
17	"	"	"	"	"
18	"	"	"	"	"
19	"	"	"	"	"
20	"	"	"	"	"
21	"	"	"	"	"
22	"	"	"	"	"
23	"	"	"	"	"
24	"	"	"	"	"
25	"	"	"	"	"
26	"	"	"	"	"
27	"	"	"	"	"
28	"	"	"	"	"
29	"	"	"	"	"
30	"	"	"	"	"
31	"	"	"	"	"
32	"	"	"	"	"
33	"	"	"	"	"
34	"	"	"	"	"
35	"	"	"	"	"
36	"	"	"	"	"
37	"	"	"	"	"
38	"	"	"	"	"
39	"	"	"	"	"
40	"	"	"	"	"
41	"	"	"	"	"
42	"	"	"	"	"
43	"	"	"	"	"
44	"	"	"	"	"
45	"	"	"	"	"
46	"	"	"	"	"
47	"	"	"	"	"
48	"	"	"	"	"
49	"	"	"	"	"
50	"	"	"	"	"
51	"	"	"	"	"
52	"	"	"	"	"
53	"	"	"	"	"
54	"	"	"	"	"
55	"	"	"	"	"
56	"	"	"	"	"
57	"	"	"	"	"
58	"	"	"	"	"
59	"	"	"	"	"
60	"	"	"	"	"
61	"	"	"	"	"
62	"	"	"	"	"
63	"	"	"	"	"
64	"	"	"	"	"
65	"	"	"	"	"
66	"	"	"	"	"
67	"	"	"	"	"
68	"	"	"	"	"
69	"	"	"	"	"
70	"	"	"	"	"
71	"	"	"	"	"
72	"	"	"	"	"
73	"	"	"	"	"
74	"	"	"	"	"
75	"	"	"	"	"
76	"	"	"	"	"
77	"	"	"	"	"
78	"	"	"	"	"
79	"	"	"	"	"
80	"	"	"	"	"

WALTER C. BEST

SEC. K		SEC. L		SEC. M	
LOT	VOL. & PAGE	LOT	VOL. & PAGE	LOT	VOL. & PAGE
118	690 1156				

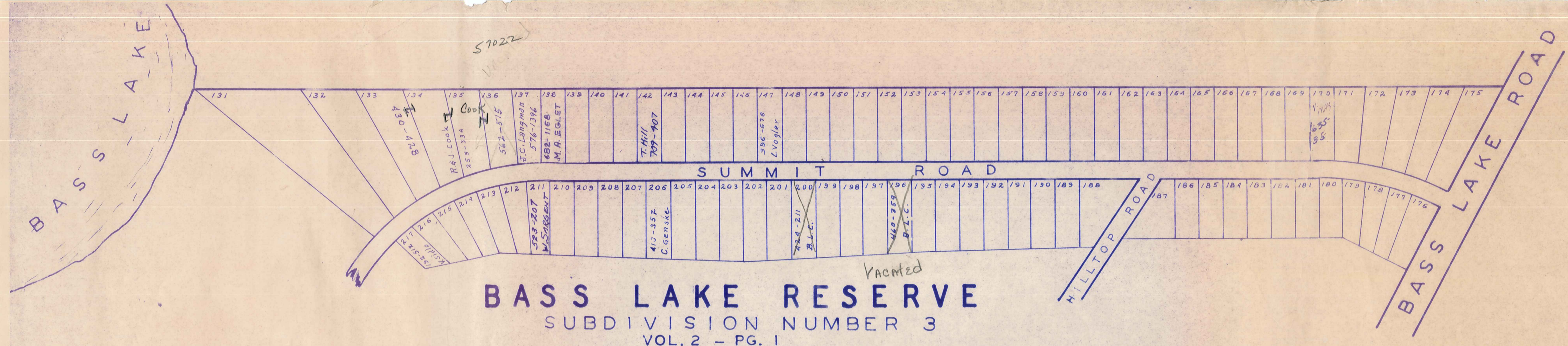
WALTER C. BEST

SEC. A		SEC. B		SEC. C	
LOT	VOL. & PAGE	LOT	VOL. & PAGE	LOT	VOL. & PAGE
6	232 434	6	232 434	6	232 434
18	"	18	"	18	"
20	"	20	"	20	"
22	"	22	"	22	"
23	"	23	"	23	"
24	"	24	"	24	"
25	"	25	"	25	"
26	"	26	"	26	"
27	"	27	"	27	"
28	"	28	"	28	"
29	"	29	"	29	"
30	"	30	"	30	"
31	"	31	"	31	"
32	"	32	"	32	"
33	"	33	"	33	"
34	"	34	"	34	"
35	"	35	"	35	"
36	"	36	"	36	"
37	"	37	"	37	"
38	"	38	"	38	"
39	"	39	"	39	"
40	"	40	"	40	"
41	"	41	"	41	"
42	"	42	"	42	"
43	"	43	"	43	"
44	"	44	"	44	"
45	"	45	"	45	"
46	"	46	"	46	"
47	"	47	"	47	"
48	"	48	"	48	"
49	"	49	"	49	"
50	"	50	"	50	"
51	"	51	"	51	"
52	"	52	"	52	"
53	"	53	"	53	"
54	"	54	"	54	"
55	"	55	"	55	"
56	"	56	"	56	"
57	"	57	"	57	"
58	"	58	"	58	"
59	"	59	"	59	"
60	"	60	"	60	"
61	"	61	"	61	"
62	"	62	"	62	"
63	"	63	"	63	"
64	"	64	"	64	"
65	"	65	"	65	"
66	"	66	"	66	"
67	"	67	"	67	"
68	"	68	"	68	"
69	"	69	"	69	"
70	"	70	"	70	"
71	"	71	"	71	"
72	"	72	"	72	"
73	"	73	"	73	"
74	"	74	"	74	"
75	"	75	"	75	"
76	"	76	"	76	"
77	"	77	"	77	"
78	"	78	"	78	"
79	"	79	"	79	"
80	"	80	"	80	"

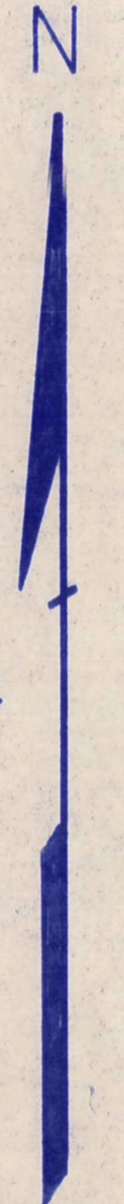
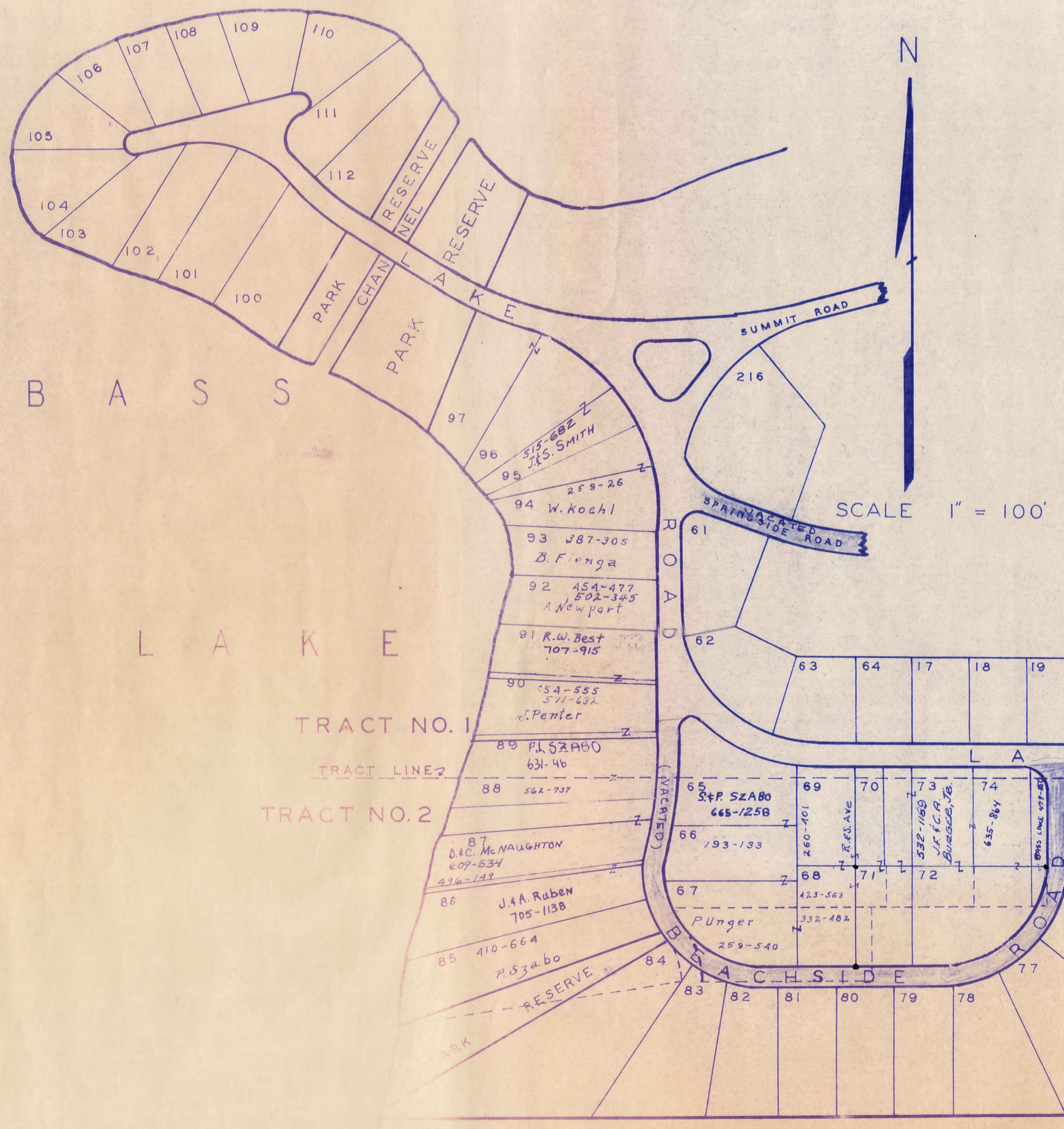
WALTER C. BEST

SEC. A		SEC. B		SEC. C	
LOT	VOL. & PAGE	LOT	VOL. & PAGE	LOT	VOL. & PAGE
11	232 443				
18	"				
23	232 444				
24	"				

57022



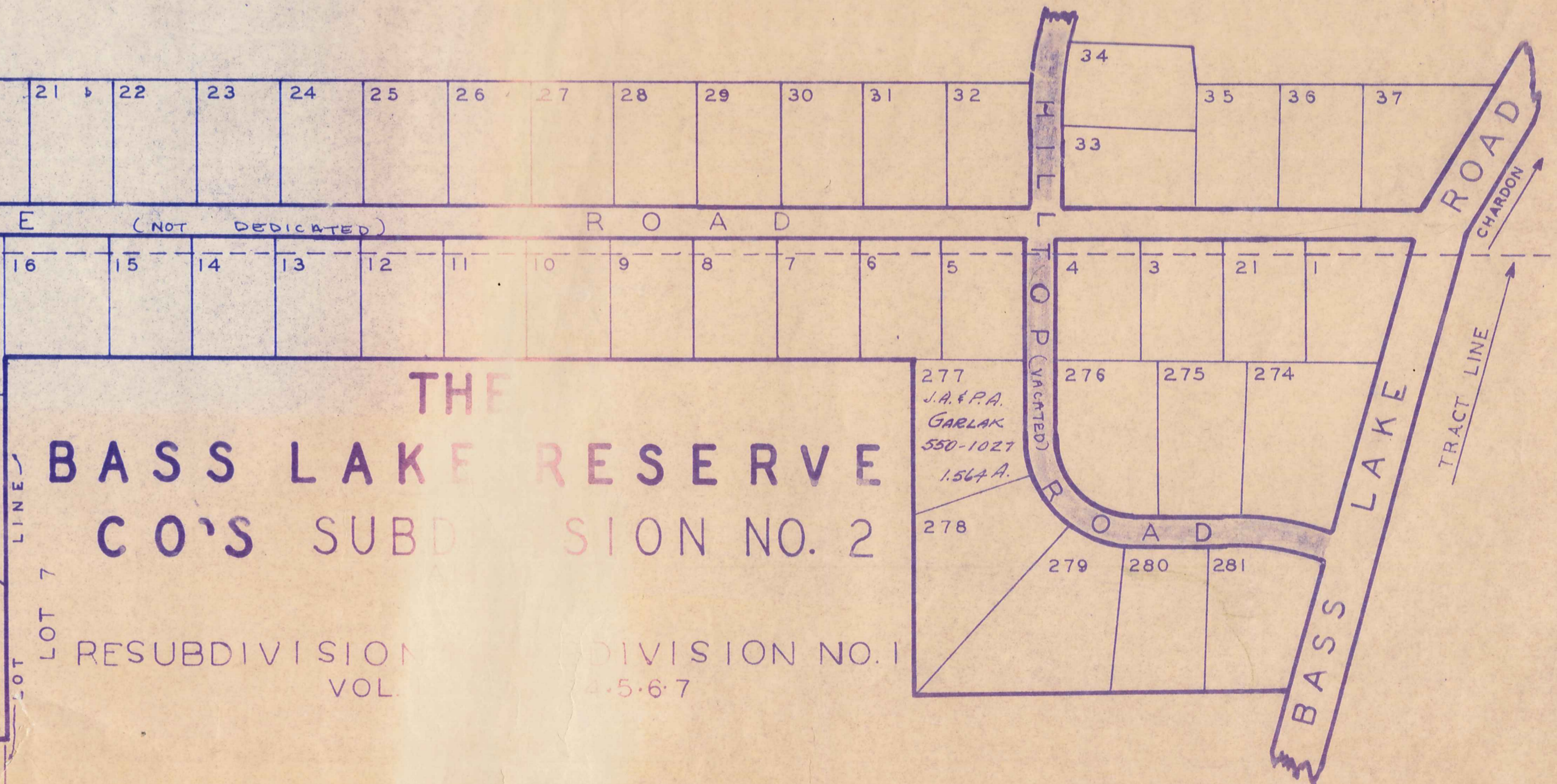
BASS LAKE RESERVE
 SUBDIVISION NUMBER 3
 VOL. 2 - PG. 1



SCALE 1" = 100'

BASS LAKE

TRACT NO. 1
 TRACT LINE 2
 TRACT NO. 2



THE BASS LAKE RESERVE CO'S SUBDIVISION NO. 2

RESUBDIVISION NO. 1
 VOL. 1 - PG. 1